



**first  
national**  
REAL ESTATE

| Gerard Smith



### 47 Moorland Road Tahmoor NSW

5 2 2

The owners are motivated to sell and will consider all reasonable offers.

We are excited to present to the market this beautiful family home that is situated in East Tahmoor. The home is elevated and sits high on the block with distant rural views. Huge in size with multiple rooms and a private oasis in the back yard will be sure to impress.

This home has had a lot of thought and planning and has many quality highlights

- Attractive 5-bedroom home on 1100m<sup>2</sup>
- Country style kitchen with raked ceiling
- Spacious formal and in-formal living areas throughout

**Type** : House  
**Price** : Price Guide \$995,000  
**Land Size** : 1100 sqm  
**View** : <https://www.gerardsmith.com.au/8113838>

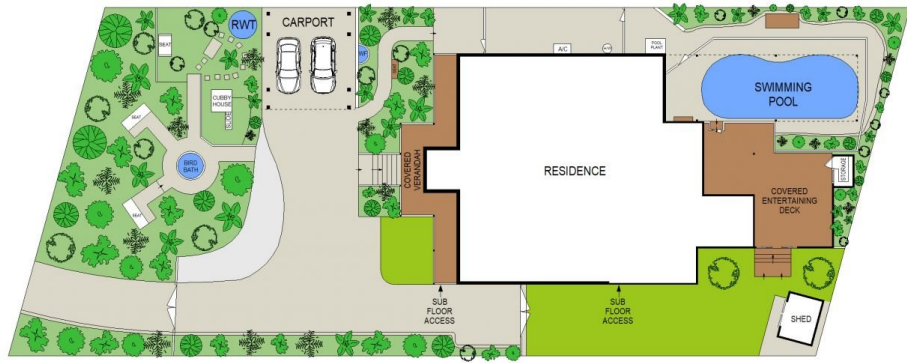


**Gerard Smith**  
02 4677 1488

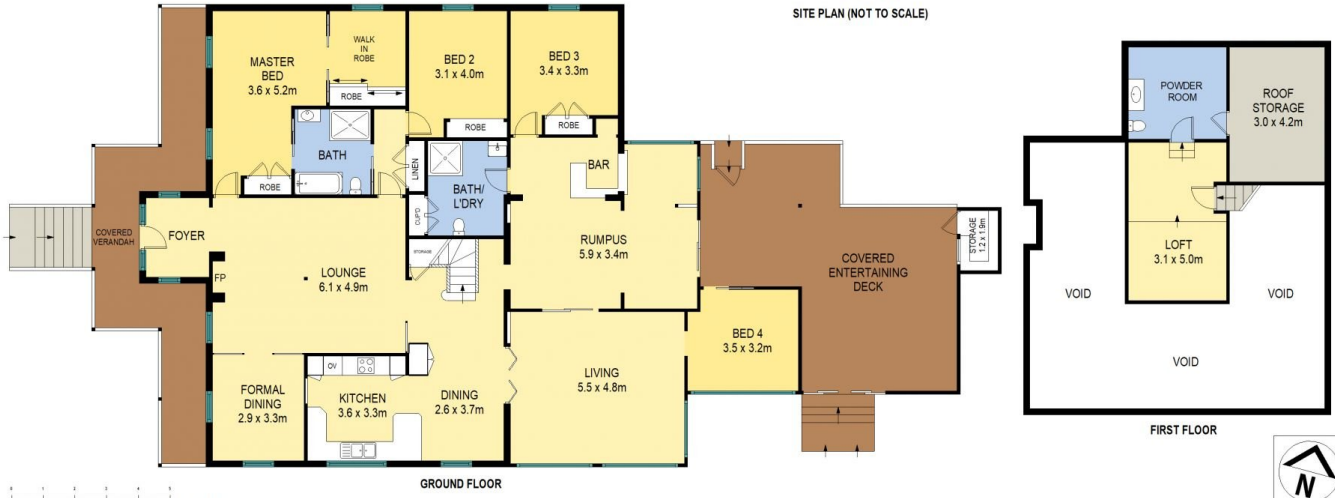
[For full version visit the website](https://www.gerardsmith.com.au)

<https://www.gerardsmith.com.au>

0246771488



SITE PLAN (NOT TO SCALE)



GROUND FLOOR

FIRST FLOOR

Scale in metres. Indicative only. Dimensions are approximate. All information contained herein is gathered from sources we believe to be reliable. However we cannot guarantee its accuracy and interested persons should rely on their own enquiries.

47 Moorland Road, Tahmoor

